



## 二、 可持续水管理承诺

水是生命之源，也是维系人类社会发展和经济繁荣必不可少的资源。为此，歌尔一直珍视水资源，并将保护水资源和不断改善水管理绩效作为企业可持续发展的基石。为成为更加优秀的水管理引领者，根据国际可持续水管理标准（AWS）的要求，特做出如下承诺：

1. 严格执行国家法律法规及地方标准的实施要求，实现 AWS 可持续水管理成果，包括良好的水管理制度、可持续的水平衡、优良的水质、重要水相关区域的健康以及安全的水、环境及程序合规性（WASH）；
2. 实施的可持续水管理计划将支持流域现有的可持续计划，并与其保持一致；
3. 以开放且透明的方式与利益相关方互动，定期披露可持续水管理行动和绩效；
4. 分配和投入充足的资源，采取实际行动，以实现 AWS 标准要求 and 成果，促进水资源的保护和可持续利用。

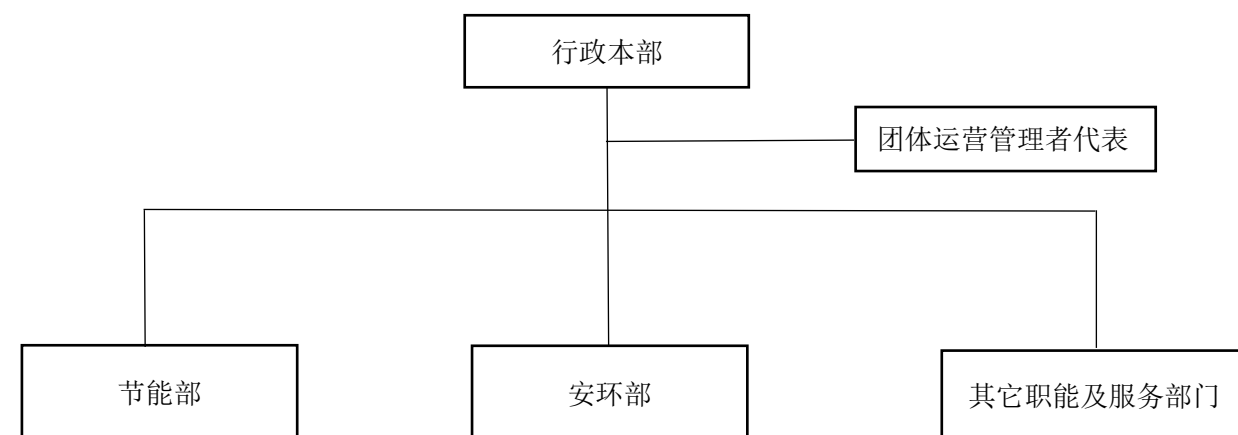
签名：



日期：



## 三、 可持续水管理组织架构



#### 四、 可持续水管理部门

由节能部负责水资源管理的统筹责任，推动协调可持续水管理工作。

联系方式：geep.pub@goertek.com

#### 五、 面临的共同水挑战

##### 1. 水资源短缺

- 采用节水卫生器具。
- 张贴节水标识，提高全员节水意识。
- 利用冷热水回用、中水回用，提高水资源利用率，降低取水量与消耗量。

##### 2. 流域水质恶化

- 严格执行雨污分流的管理制度，禁止非雨水排入雨水管网
- 确保生活污水 100%达标排放。
- 每年对流域内的一条河流进行检测，持续关注其水质变化情况。

##### 3. 更为严格的污水排放标准

- 确保生活污水 100%达标排放。
- 制定水质检测计划，每年对外排污水进行检测。

##### 4. 极端气候影响，如干旱、洪涝灾害

- 通过实施节能减排项目，减少温室气体排放，减缓极端气候事件。
- 针对供水中断、突发环境事故、洪涝等突发事件制定应急预案。

## 2025 Sustainable Water Management Public Disclosure

### 1. ~~Statement of Sustainable Water Management~~

~~Goertek has always adhered to the concepts of "Respecting Water Rights", "Green Innovation", "Collaborative Leadership" and "Watershed Protection", striving to create a sound water ecological environment where humans and nature coexist harmoniously, and contributing to ensuring watershed water security.~~

(1) ~~Respecting Water Rights:~~ Respect the water rights of all stakeholders, operate in ~~compliance with regulations and standards for drinking water and environmental hygiene, and personal hygiene for stakeholders to enhance their health and well-being. If the site's own conditions permit, it is will~~ to meet social, cultural, or environmental needs.

(2) ~~Green Innovation:~~ Water management performance and utilization efficiency are ~~improved through water conservation and continuous improvement through emission reduction, extensive stakeholder consultation, employee training, and other measures.~~

(3) ~~Collaborative Leadership:~~ Work closely with business partners to identify and analyze water related risks in production and operation processes, and take effective mitigation measures to promote sustainable water management on a broader scale.

(4) ~~Watershed Protection:~~ Strongly support and cooperate with the watershed water management activities initiated by the local government, and work together with all ~~stakeholders to provide suggestions and actions for protecting the watershed water environment.~~

### 2. ~~Commitment to Sustainable Water Management~~

~~Water is the source of life, and an indispensable resource for sustaining the development of human society and economic activities. Therefore, Goertek has always~~

---

valued water resources, considering their protection and the continuous improvement of water management performance as the cornerstone of the company's sustainable development. To become a leading example in water management excellence in accordance with the requirements of The Alliance for Water Stewardship (AWS) Standard, we hereby make the following commitments:

(1) ~~Actively promote the implementation of sustainable water management plans and~~ publicly disclose progress to improve AWS sustainable water management outcomes, including sound water management systems, sustainable water balance, excellent water quality, Water and Sanitation for Health (WASH) in Important Water-related Area;

(2) ~~The implemented~~ sustainable water management plan will support and align with the existing sustainable programs in the watershed;

(3) Engage with stakeholders in an open and transparent manner, and regularly disclose

#### 4. Sustainable Water Management Compliance Personnel and Contact Information.....

The Energy Conservation Department is responsible for the overall coordination of water resource management and supports the development of coordinated corporate-wide water management efforts.

Contact: Vinkey.Liu

Email: geep.pub@goertek.com

#### 5. ~~Green Water Challenges~~

##### (1) Water Resource Shortage

- Install water-saving sanitary fixtures.
- Post water conservation signs to raise awareness among all personnel.
- Water resource utilization efficiency is improved and water intake and consumption are reduced by reusing cooling water and reclaimed water.

##### (2) Deterioration of River Basin Water Quality

- Strictly implement the management water for correct drainage of rainwater and sewage and prohibit the discharge of pop-rainwater into the rainwater pipeline network.
- Ensure 100% compliance of domestic sewage with discharge standards.
- Establish a water quality monitoring system and conduct annual testing annually to keep continuous track of its water quality changes.

##### (3) ~~Climate Change Impact of Rainwater Discharge~~

- Ensure 100% compliance of domestic sewage with discharge standards.
- Formulate a water quality testing plan and conduct annual testing on discharged wastewater.

##### (4) Impact of Extreme Climate Events (e.g., Droughts and Floods)

- Implement energy conservation and emission reduction projects to mitigate our impact on the climate and environment.
- Develop contingency plans for emergencies such as water supply interruptions, sudden environmental incidents, and flooding.