

Revenue



2020



2019

Net profits to the parent Co



2020

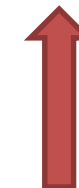


2019

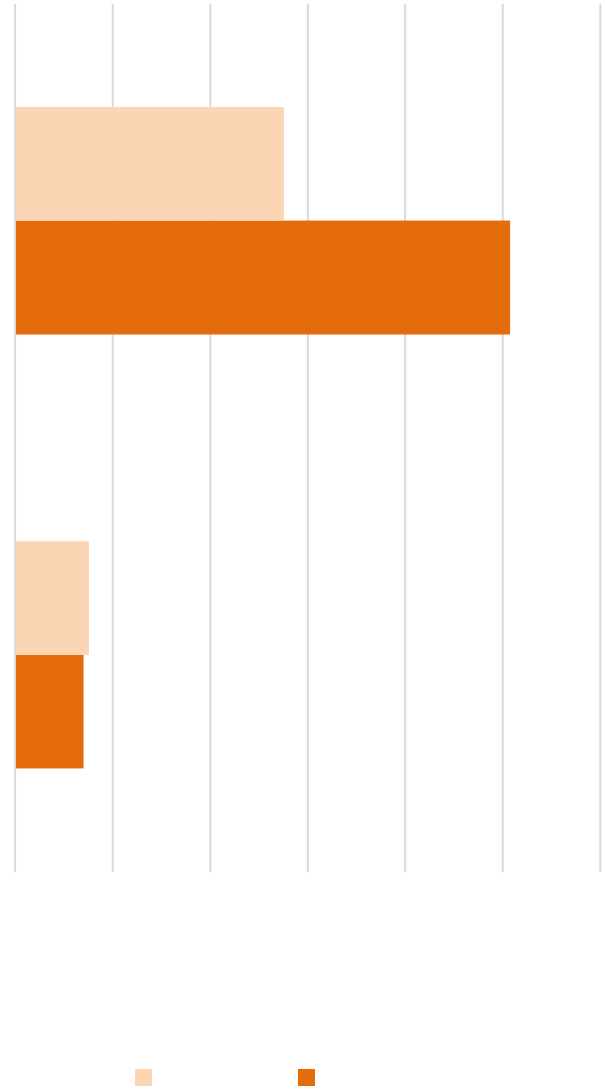
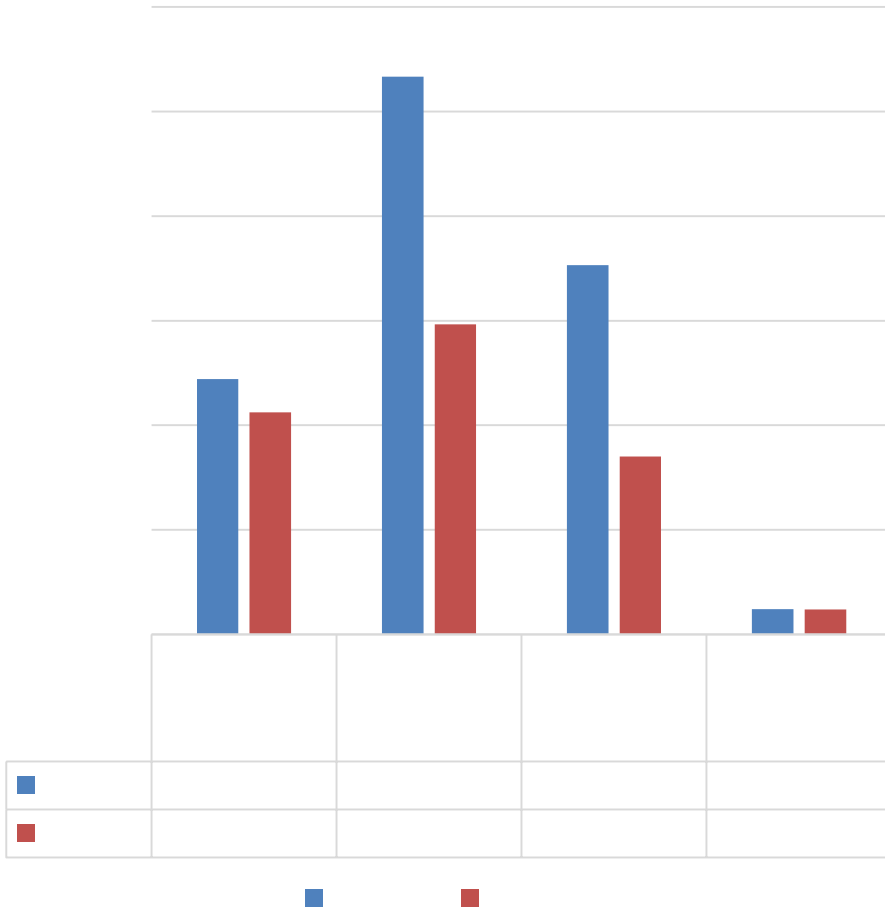
Net cash flows from operating activities

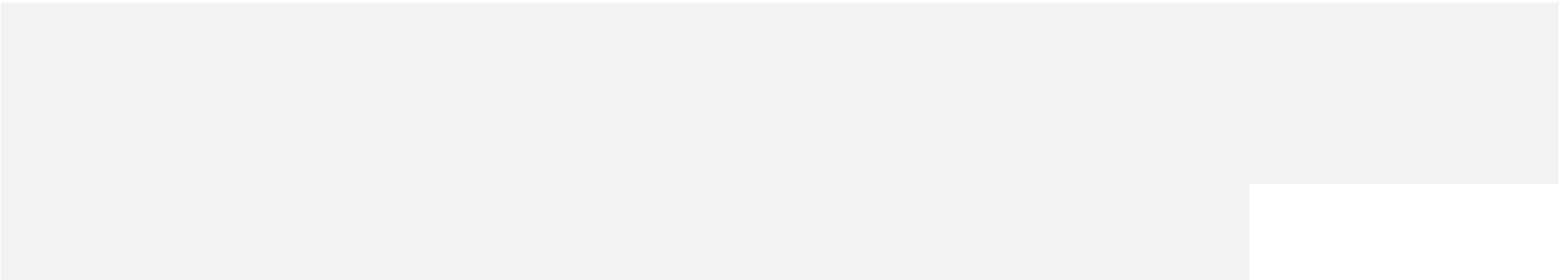
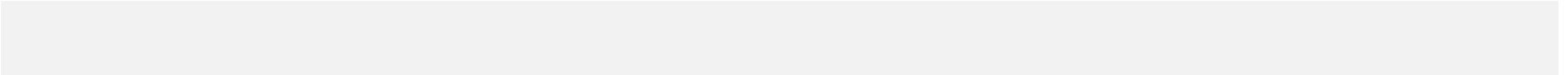
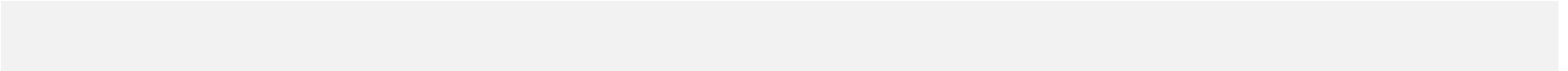
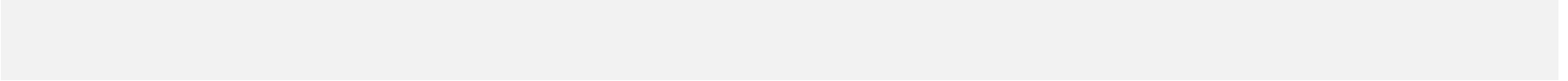
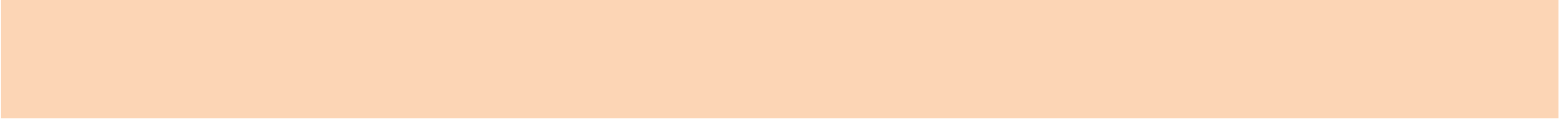


2020



2019



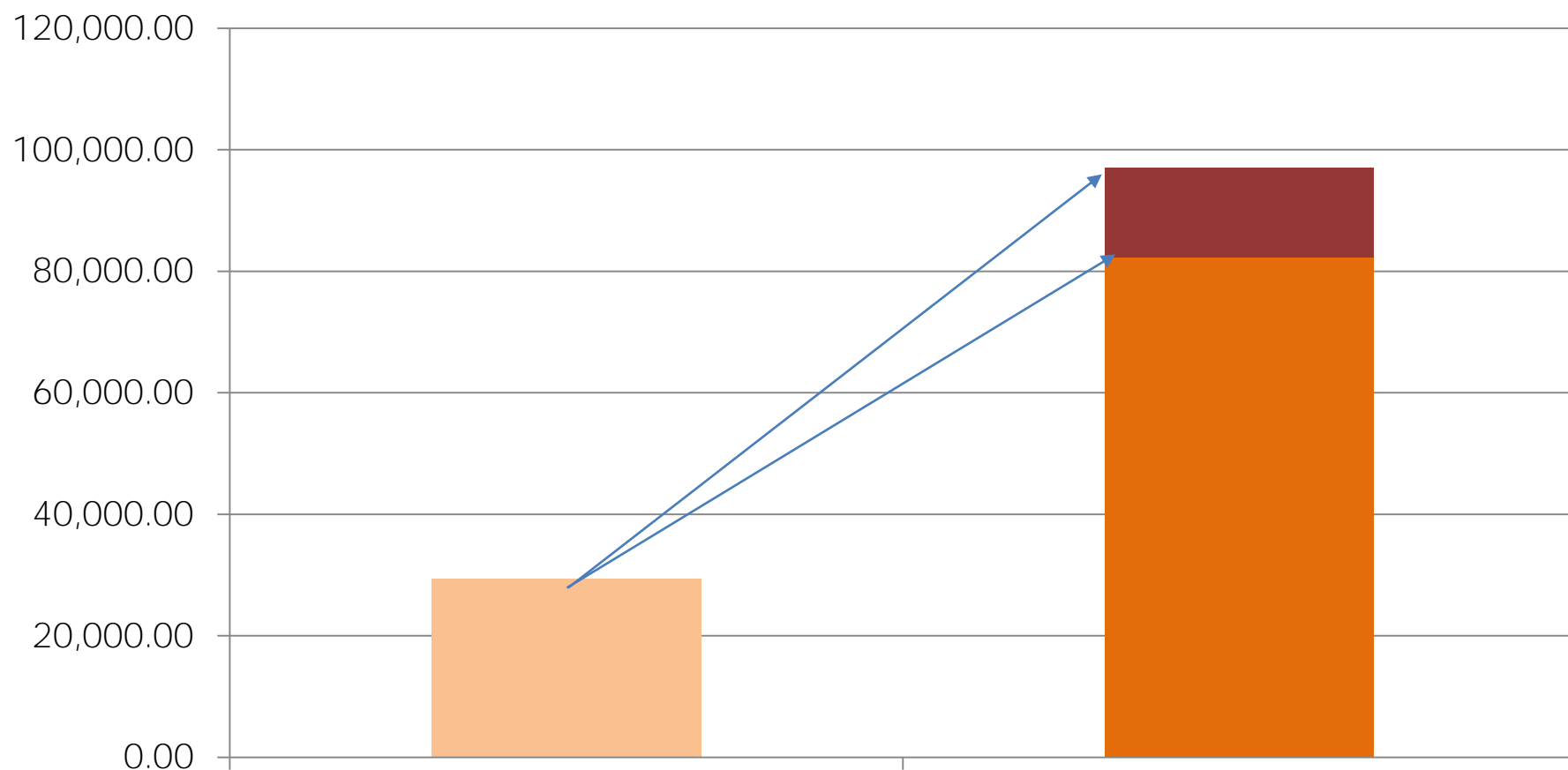


- Continuously improving the machining precision and accuracy
 - Realized self-manufacturing of plastic parts, metal parts, diaphragm and other core raw materials
 - Precision manufacturing in the fields of Optical lens, Optical-circuit design, Precision optics,VR/AR, Micro-display/Micro-projection, Sensors, MEMS, Sip, etc
 - Quick and high quality mass production capacity.
 - Introduced expertise and integrated peripherals, realized flexible automatic production, to promote the " Smart Manufacturing "
-
- R & D platform integrated with multiple technologies has been established to provide the systematic overall solutions.
 - Established long-term strategic partnerships with world renowned universities and research institutions.

- Constantly optimize the resource distribution to serve for existing quality clients
- Consolidate the core competitive advantage in our smart mobile terminal industry, and looking for new profit growth point

- Highly qualified and competent leaders that have graduated from renowned universities and from renowned companies.
- Dynamic and rich management experience in many specialty areas in order to stay with the industry trends and to avoid the risks.

Variation Range of Net Profits Attributable to Shareholder of Parent Company for Q12021(RMB mn):



| | 2020 | 2019 | Changes |
|---|----------------------|----------------------|---------|
| Revenue (RMB mn) | 57,742.74 | 35,147.81 | 64.29% |
| Net Profits Attributable to Shareholder of Parent Company(RMB mn) | 2,848.01 | 1,280.54 | 122.41% |
| Net profits attributable to shareholders of the Company excluding non-recurring gains and losses (RMB mn) | 2,758.91 | 1,348.63 | 104.57% |
| Net Cash Generated From Operating Activities(RMB mn) | 7,682.26 | 5,451.43 | 40.92% |
| Basic EPS | 0.89 | 0.40 | 122.50% |
| ROE | 16.40% | 8.19% | 8.21% |
| | As at 31 Dec 2020 | As at 30 Dec 2019 | Changes |
| Total Assets(RMB mn) | 49,117.83 | 34,660.30 | 41.71% |
| Net Assets Attributable to Shareholder of Parent Company | 5,240.92 | 2,000.00 | 162.01% |

THANK YOU!

